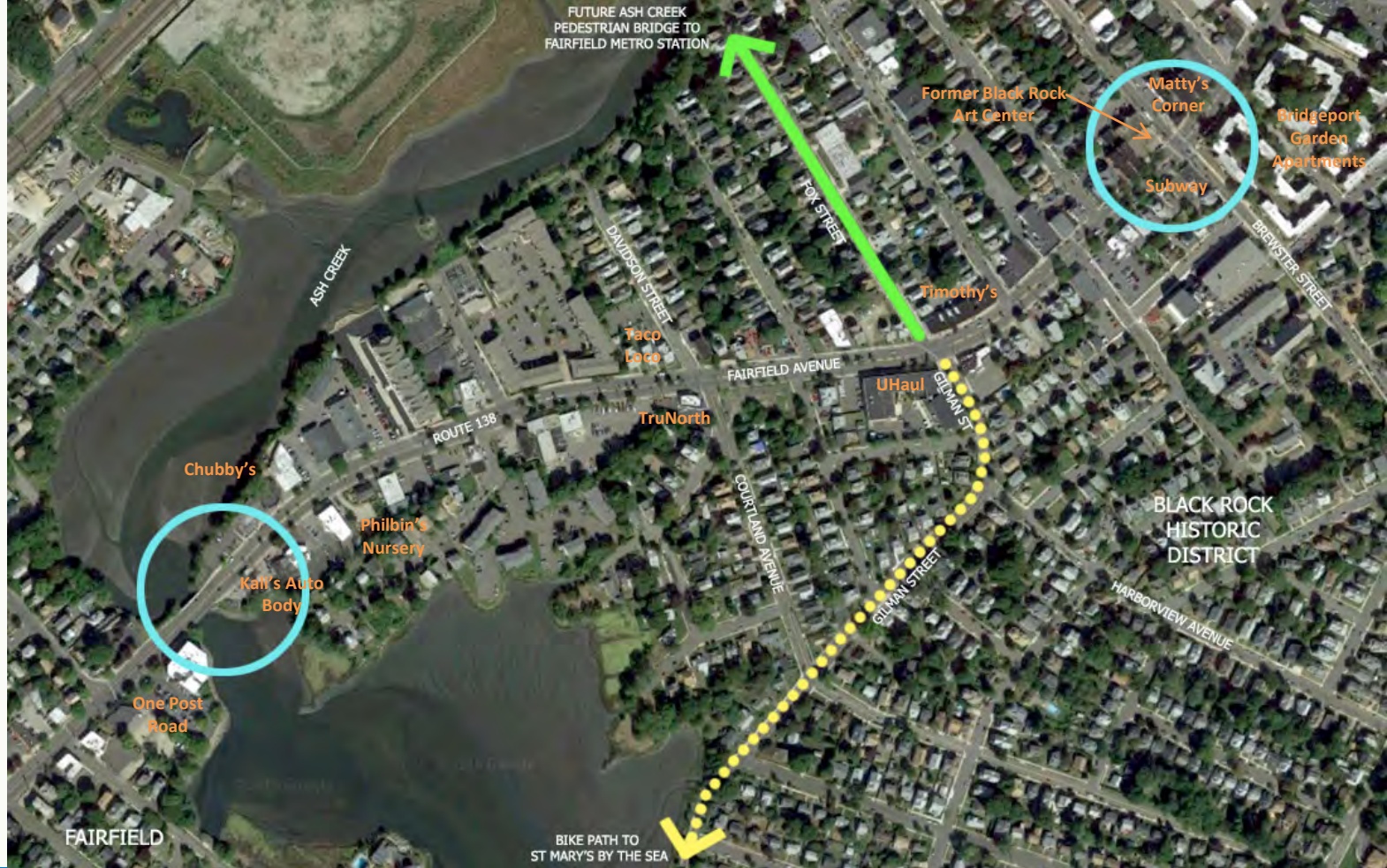


BLACK ROCK BUSINESS DISTRICT STREETScape IMPROVEMENT PROJECT



July 6, 2017





FUTURE ASH CREEK
PEDESTRIAN BRIDGE TO
FAIRFIELD METRO STATION

Former Black Rock
Art Center

Matty's
Corner

Bridgeport
Garden
Apartments

Subway

Timothy's

Taco
Loco

TruNorth

UHaul

Chubby's

Philbin's
Nursery

Kali's Auto
Body

One Post
Road

FAIRFIELD

BIKE PATH TO
ST MARY'S BY THE SEA

Context



ASH CREEK

FAIRFIELD AVE (ROUTE 130)

CITY OF BRIDGEPORT
TOWN OF FAIRFIELD

JEWISH HOME
FOR ELDERLY

FRANCESCA'S
HAIR & SPA
MORGANA
BOUTIQUE
CHUBBY'S
PUB

SABRINA
NAIL

STOKED
SMOKE SHOP

CAPPY & SON
& DAUGHTER

ASPETUCK
BREW LAB

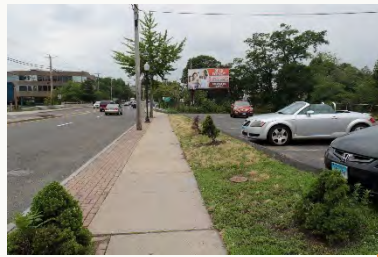
KALI'S
AUTO
BODY

COASTLINE
SERVICE
CENTER

FREEMAN
COMPANIES



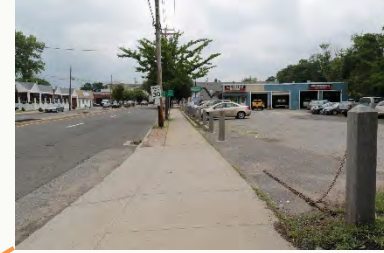
Billboard, overgrown vegetation and chain link fence at top of creek bank



Concrete sidewalk and concrete pavers in poor condition, lack of plantings to screen parking



Street trees missing from median, decorative lighting and pavers need refurbishment



Front yard parking, no green space



Roadway and sidewalk narrows at bridge



Gateway sign at bridge



Expansive pavement, overhead powerlines, poor condition of pavement, lack of street trees



Public access trail

Existing Conditions

Black Rock Gateway



GROCERY STORE

PARAMOUNT PIZZA

BREWSTER ST

LA TAVERN KITCHEN & BAR

MATTY'S CORNER

FAIRFIELD AVE (ROUTE 130)

BRIDGEPORT GARDEN APARTMENTS

ANGELS FLOWERS

SUBWAY

ROESCAL GROCERY & DELI

SERVICE MASTER CLEAN

PARK CITY TATTOO

WILSON ST

HIGGINS GROUP REAL ESTATE

FREEMAN
COMPANIES



Delivery trucks service from street, conc, sidewalk in poor condition, guy wires and utility poles in walk



Billboards, overhead wires, tree conflict, building signage, pedestrian signal



Very wide roadway, long distance for pedestrians to cross, lack of street trees



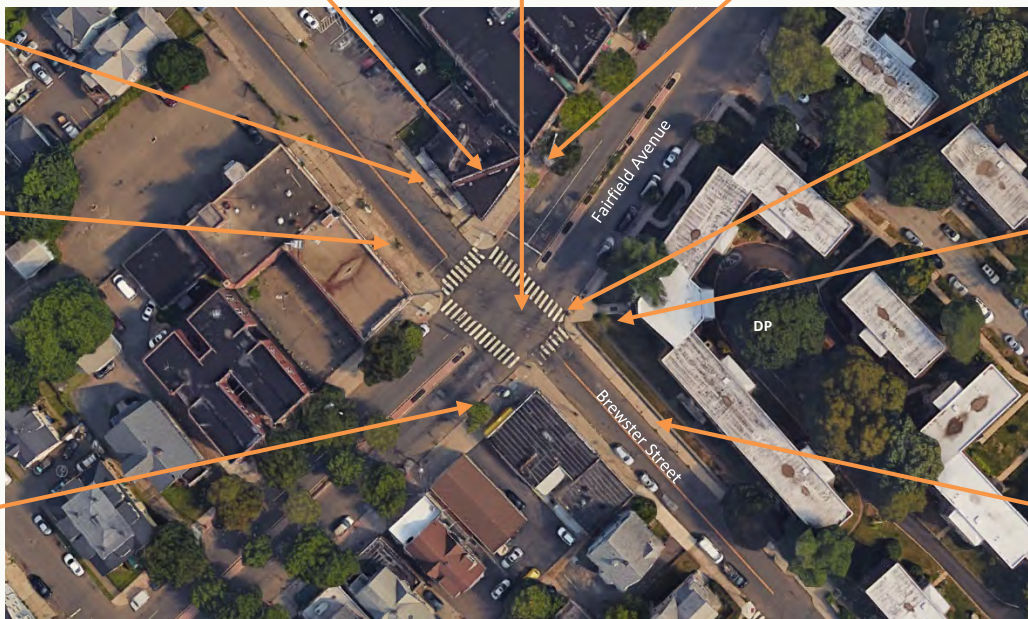
Bus stop, street lights, wide sidewalks, street trees missing



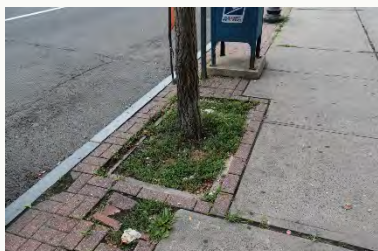
Protect historic mileage marker



Bus stop, lack of street trees and trash receptacles, front yard parking at building across street



Well maintained grounds, lack of street trees



Tree grate missing, concrete paver pavement deteriorating

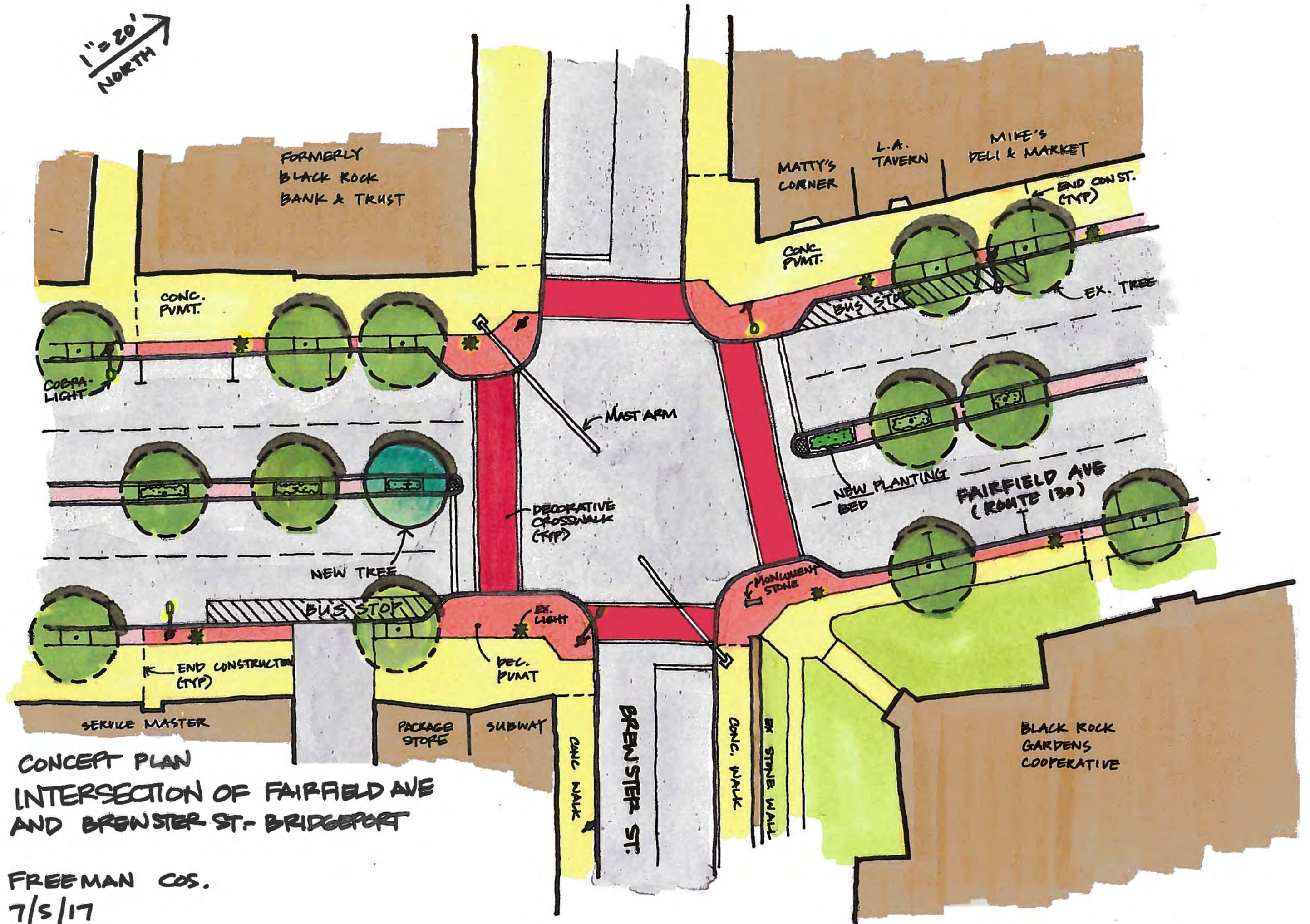


Protect existing stone wall, limited sidewalk width

Existing Conditions

Fairfield Avenue and Brewster Street

1" = 20'
NORTH



CONCEPT PLAN
INTERSECTION OF FAIRFIELD AVE
AND BREWSTER ST. - BRIDGEPORT

FREEMAN COS.
7/5/17

BLACK ROCK STREETSCAPE

STREETSCAPE MATERIALS



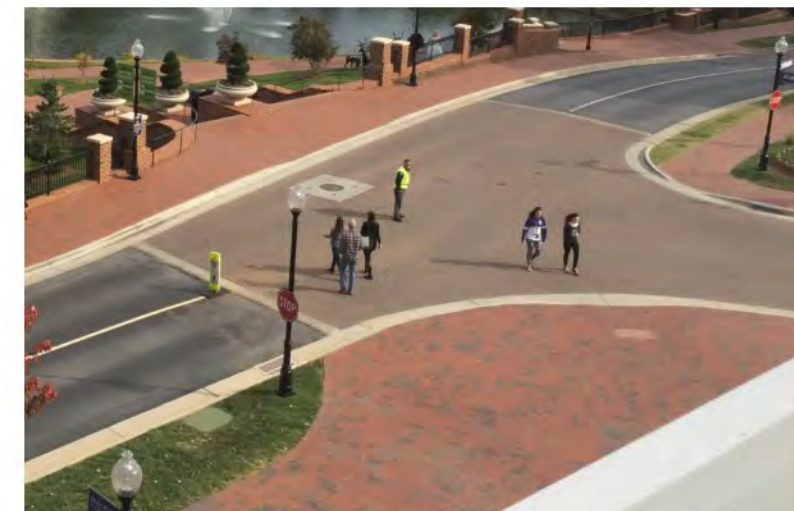
BUMPOUT— CLAY BRICK



RAISED CONTRASTING PAVEMENT



CROSSWALK— TRAFFIC PATTERNS XD



DECORATIVE RAISED INTERSECTION



BUMPOUT— CONCRETE PAVERS



MEDIAN



CROSSWALK— CONCRETE PAVERS



DECORATIVE PAVED INTERSECTION



BUMPOUT— BIOSWALE



CROSSWALK— ASPHALT PAVERS



CUSTOM ART WORK

BLACK ROCK STREETScape

FURNISHINGS



GREEN ROOF BUS STOP



DUMOR BENCH



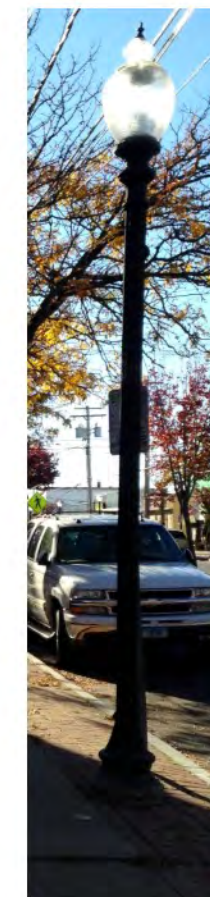
EXISTING SIGNAGE



VIACOM BUS STOP (SPONSORED)



CONNECTED BUS STOP



ORNAMENTAL LIGHT



TRASH RECEPTACLE